

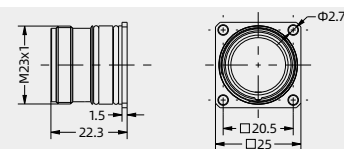
## HR23 Housing material

## Degree of protection: IP67

Housings, bulkhead mounting  
back wall assembly, with O-ring sealing  
and 4  $\Phi 2.7$  holes



screw	Designation	Order No.
---	HR23-BK/R-OD2.7	181 000 310 1101

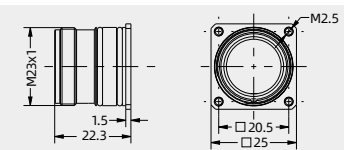


When using counter sunk screws,  
Panel cut out  $\Phi 23+0.1$ , Panel thickness: 2.7-3.5,

Housings, bulkhead mounting  
back wall assembly, with O-ring sealing  
and 4 M2.5 holes



screw	Designation	Order No.
---	HR23-BK/R-OM2.5	181 000 310 1102

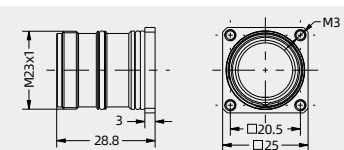


When using counter sunk screws,  
Panel cut out  $\Phi 23+0.1$ , Panel thickness: 2.7-3.5,

Housings, bulkhead mounting  
back wall assembly, with O-ring sealing  
and 4 M3.0 holes



screw	Designation	Order No.
---	HR23-BK/R-OM3.0	181 000 310 1103

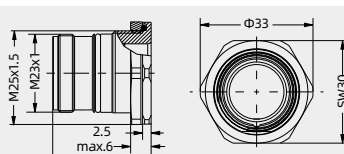


When using counter sunk screws,  
Panel cut out  $\Phi 23+0.1$ , Panel thickness: 3.5-8.5

Housings, bulkhead mounting  
back wall assembly, with central locking M25



screw	Designation	Order No.
M25	HR23-BK/R-OM25	181 000 310 1104

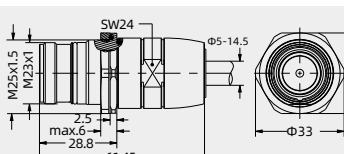


Panel cut out  $\Phi 25+0.1$ , Panel thickness: 6

EMC Housings, cable to cable  
back wall assembly, with central locking  
M25



screw	Designation	Order No.
M25	HR23-CCT/R-OM25	181 000 710 1004

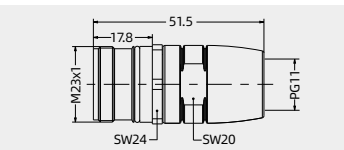


Panel cut out  $\Phi 25+0.1$ , Panel thickness: 6

Housings, cable to cable, top entry



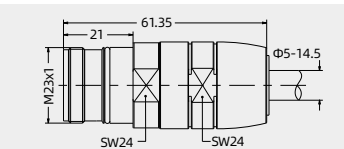
screw	Designation	Order No.
M20	HR23-CCT-M20	181 000 710 1001
PG11	HR23-CCT-PG11	181 000 710 1002



Housings, cable to cable, top entry  
EMC version



screw	Designation	Order No.
---	HR23-CCT-EMC	181 000 710 2003

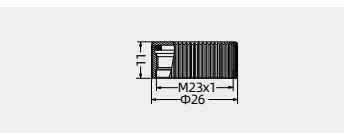


Install or remove this kind of product need to use the HR23-TL01 tools.

Screw cover  
for bulkhead mounted and cable to  
cable housings



screw	Designation	Order No.
---	HR23-MCV-F	181 000 010 9003



Screw cover  
for bulkhead mounted and cable to  
cable housings, with rope



screw	Designation	Order No.
---	HR23-MCV-F2	181 000 010 9002

